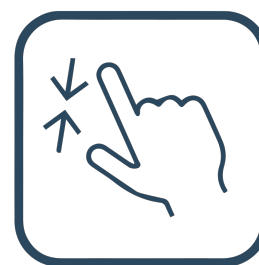




## FAN COIL



Ultra Slim Design



Dual Direction of Water  
Drainage



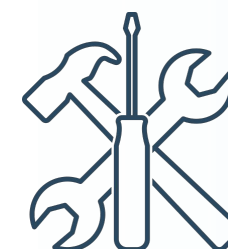
Silence



Flexible Air Intake



Optional panel



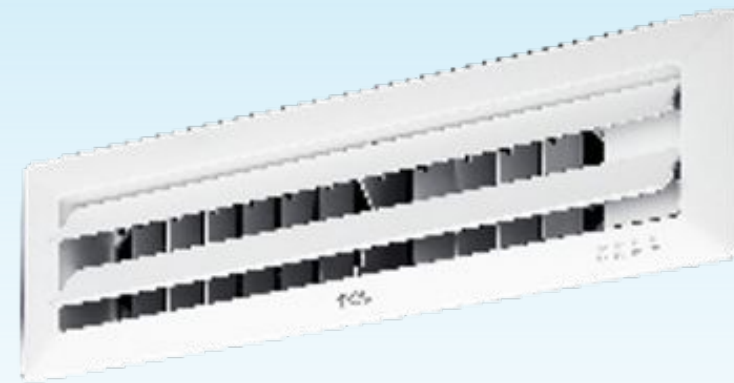
Easy Maintenance

# FAN COIL

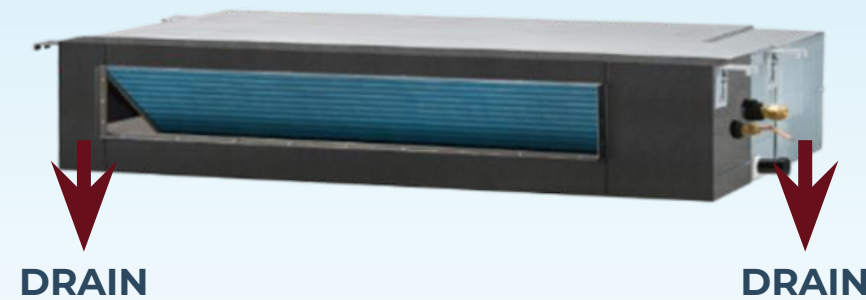
boreal  
INTERNATIONAL



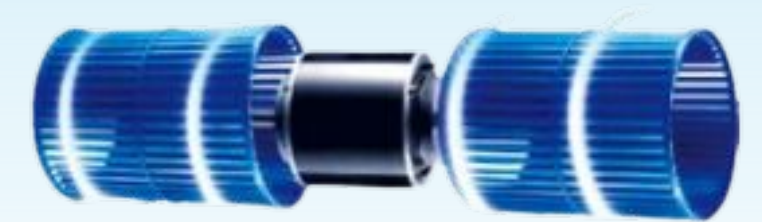
**Ultra Slim Design**



**Optional panel**



**Dual Direction of  
Water Drainage**



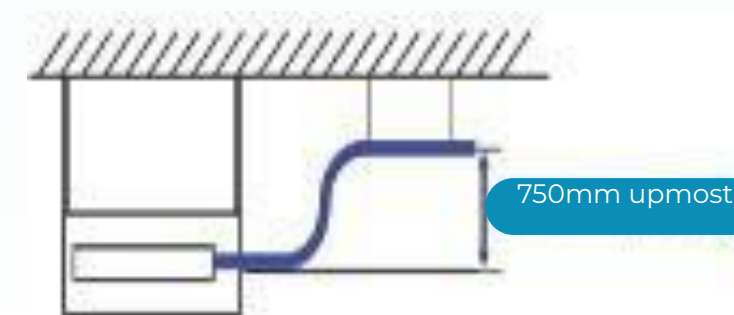
**Silence**



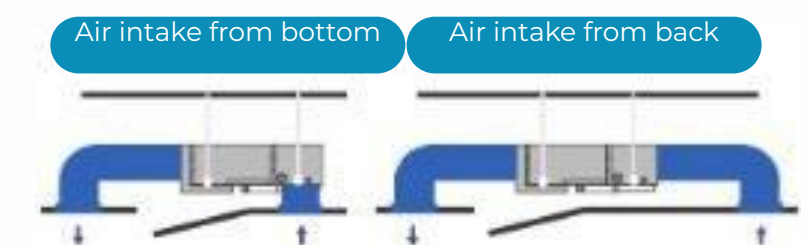
**Easy Maintenance**



**Healthy Breath  
(optional)**



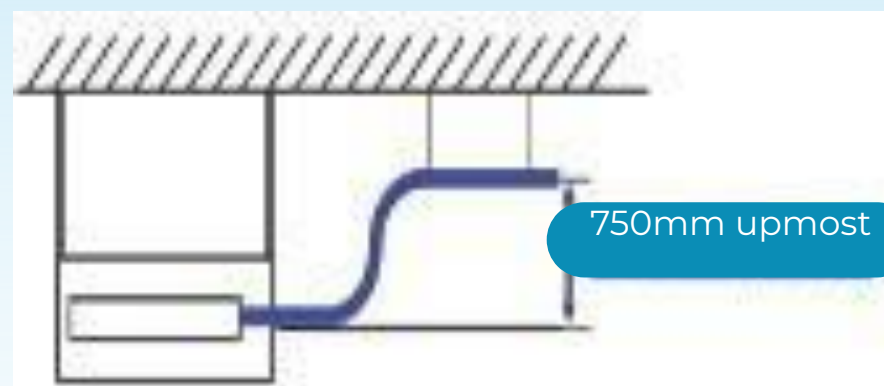
**Built-in Drain Pump  
(optional)**



**Flexible Air Intake**

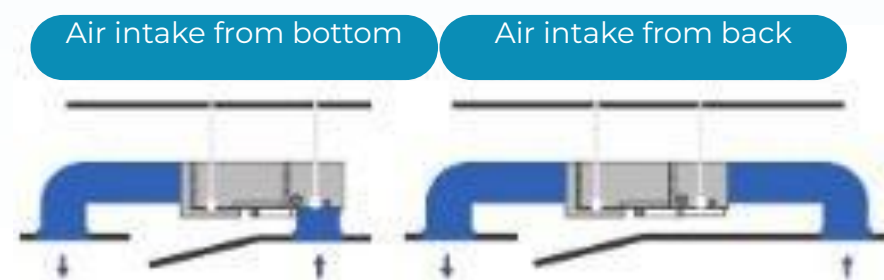
# FAN COIL

## Built-in Drain Pump (optional)



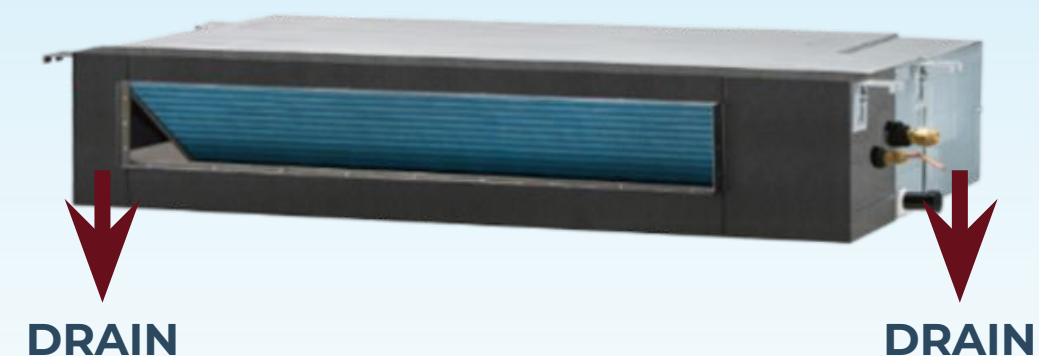
The drainage pump can lift the condensing water up to 750mm.

## Flexible Air Intake



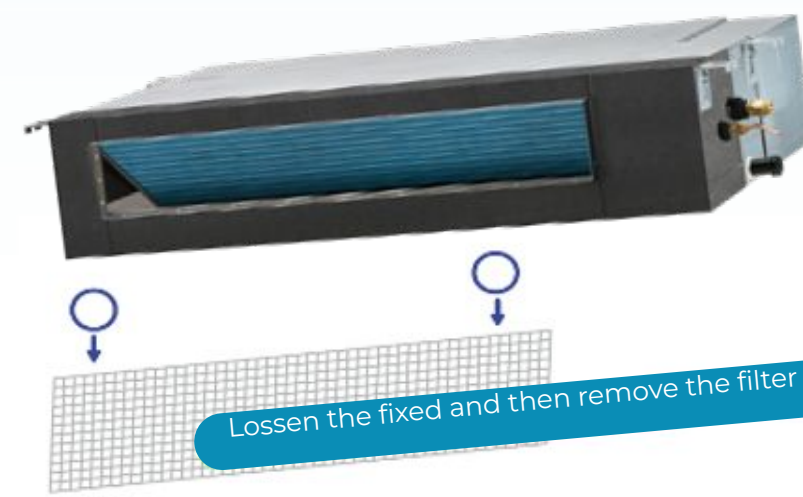
It is optional to have air inlet from back or bottom with the same size of plate, which will be very flexible and convenient for installation.

## Built-in Drain Pump (optional)



The condensing water can be drained either from the left or right.

## Easy Maintenance



Filters can be easily removed for cleaning.



SPECIFICATIONS (LIGHT COMMERCIAL A/C)				
Model name	FAN COIL		BUMAT36COJ1DAST	BUMAT60COJ1DAST
Power supply		V/Ph/Hz	208-230V~/60Hz	208-230V~/60Hz
Cooling	Capacity	Btu/h	36000	55000
	Capacity	W	10550	16119
	Input	W	4180	6400
	Rated current	A	17.60	25.3
	EER	W/W	2.52	2.52
Indoor coil	Number of row		3	4
	Fin spacing	mm	1.4	1.4
	Fin material		Hydrophilic & Louver Fin	Hydrophilic & Louver Fin
	Tube outside diameter	mm	φ7	φ7
	Tube material		Innergroover tube type	Innergroover tube type
	Coil length x height x width	mm	948×336×38.1	1030×378×50.8
	Number of circuit		8	8
Indoor fan motor	Brand		BROAD-OCEAN3	BROAD-OCEAN
	Model		Y7S623C257	Y6S443C807
	Input	W	232/209/156/126	433/306/150/119
	Running current	A	1.2/0.97/0.69/0.55	1.2/0.97/0.69/0.55
	Capacitor	uF	10.0	10.0
	Applied QTY.		1	1
	Speed (Hi/Me/Lo)	rpm	915/845/690/600	915/845/690/600
Indoor air flow (Hi/Me/Lo)		Wm <sup>3</sup> /h	1350/1200/950	1800/1600/1100
Indoor external static pressure (Hi)		Pa	80	100
Indoor noise level (Hi/Me/Lo)		dB(A)	51/49/47	52/50/48
Indoor dimension	Unit (WxHxD)	mm	1140×270×775	1200×300×865
	Packing (WxHxD)	mm	1341×341×830	1400×371×920
Indoor weight	Net	kg	35	48
	Gross	kg	40	55
Refrigerant	Type		R410A	R410A
Refrigerant pipe	Liquid side	mm	9.52	9.52
	Gas side	mm	φ19.05	φ19.05
Drainage water pipe diameter		mm	OD25	OD25
Operation temperature range		°C	16~31	16~31
Operation Control			Remote controller	Remote controller

## NOTES

### 1. Nominal cooling capacities are based on the following conditions:

Indoor temp: 27°CDB, 19°CWB; Outdoor temp: 35°CDB;  
Equivalent ref. piping: 7.5m (horizontal)

### 2. Nominal heating capacities are based on the following conditions:

Indoor temp: 20°CDB; Outdoor temp: 7°CDB, 6°CWB; Equivalent ref. piping: 7.5m (horizontal)

### 3. Actual noise level may differ, depending on the room structure, etc, since these noise values are from an anechoic room.

Remark: The above design and specification are subject to change without prior notice for product improvement.